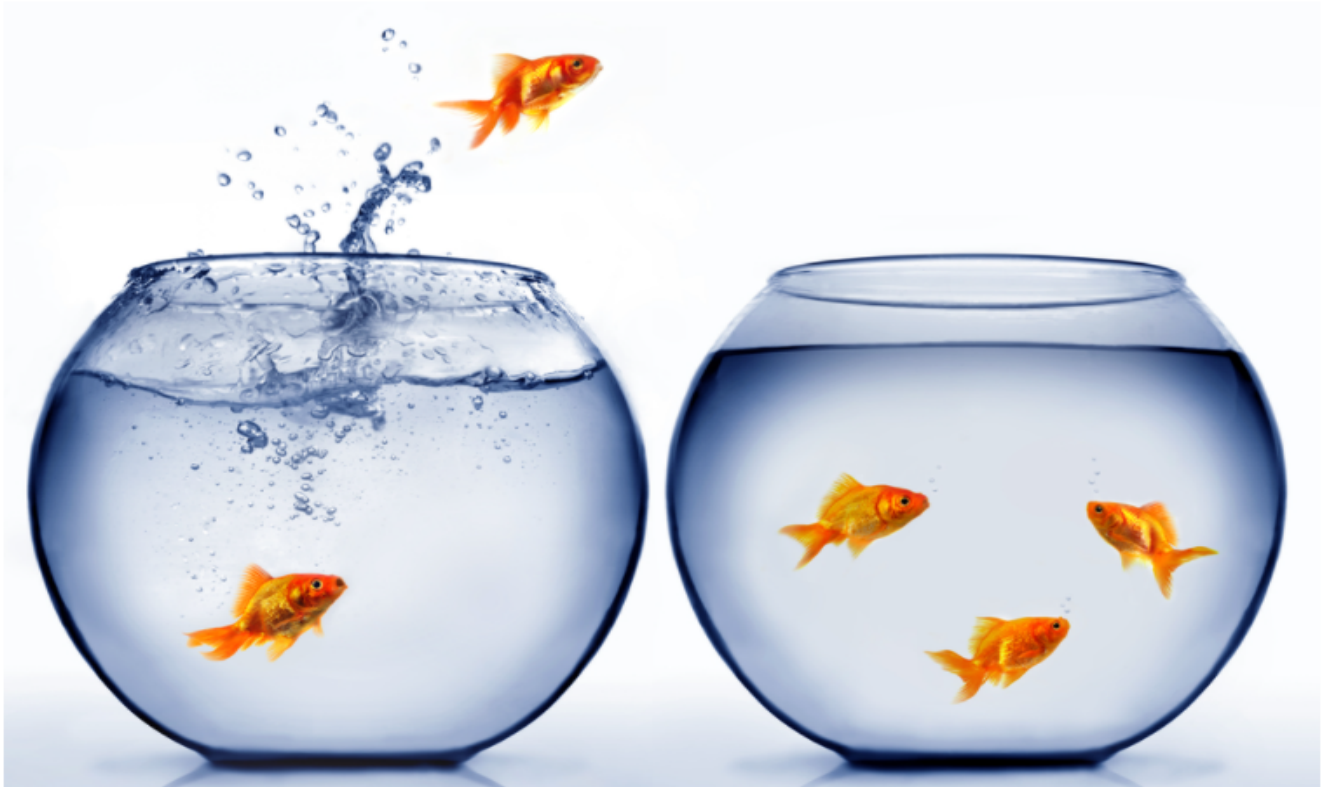


## Interested in a reassignment opportunity?



PTF Clerks, PSEs and MHAs can now apply for 50-mile canvass opportunities via the eReassign program.

Applicants will see any available canvass within 50 miles of their current bid cluster

2 postings scheduled each month:

the 1<sup>st</sup>-10<sup>th</sup> and 15<sup>th</sup>-25<sup>th</sup>

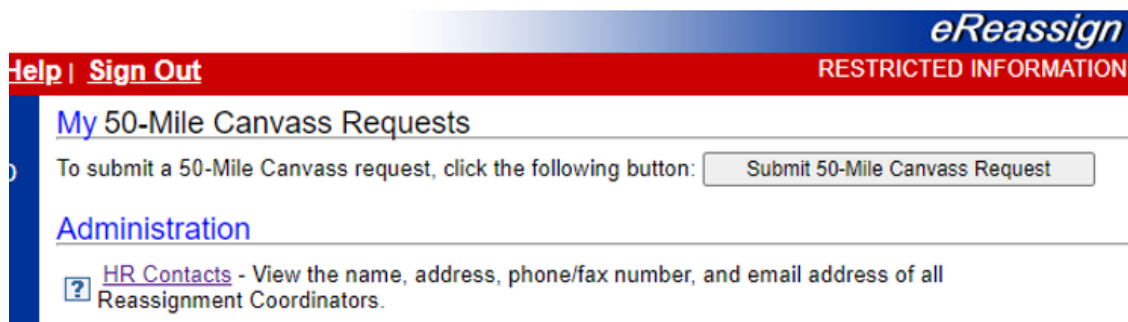
For more information, visit [Liteblue/eReassign](#)

## STAND-UP TALK

Attention All PTF Clerks, PSE's, and MHA Employees

Effective February 1<sup>st</sup> all canvassing for conversion / reassignment outside of your current installation will be done online via Liteblue/eReassign. District Human Resources will **no longer be sending out** canvassing sheets.

Canvasses will open on the 1<sup>st</sup> and 15<sup>th</sup> of each month and will remain open for 10-days. Employees are to use their EIN and password to login to **eReassign.usps.com**, then look for My 50-Mile Canvass.



If offices are posted within a 50-Mile radius of your current office, then you will be allowed to apply for that canvass.

Once logged into the 50-Mile Canvass site you will be required to do the following:

1. Complete all fields that are identified with a red asterisk \*
2. If driving is a requirement, understand and accept the terms of the Driving Disqualifications Table

3. Acknowledge that your current bid cluster is within 50-miles of the offices in the canvass
4. Select the office(s) that you would like to apply for on the canvass and hit the agree button to the Privacy Act.
5. Hit the display button to place the offices you selected in priority numerical order (1, 2, 3,4 etc.)

#### 50-Mile Canvass Reassignment Opportunity Selection

**Instructions:** Select your choices from the table below by entering the choice number into the Choice # textbox. If you would like to unselect or remove a reassignment opportunity, delete the entry from the Choice # textbox. Selections will be ranked by your numerical choice.

Posting ID ?	Bid Cluster ?	Work Location ?	Position Type ?	Schedule ?	Hours ?	Skills, Schemes, License ?	Pay Lvl ?	Title ?	Choice # ?
45765	ALBANY (MN) POST OFC - IN SHD	Test Work Location	FULL-TIME REGULAR	-	40	Acceptable driving record. Provide MVR. Must qualify on: Scheme training, Window training. Other note.	06	MAIL PROCESSING CLERK	<input type="text" value="1"/>
45767	ALBANY (MN) POST OFC - IN SHD	Test Work Location	FLEX NON-TRADITIONAL FULL-TIME	Monday to Friday	40	Acceptable driving record. Provide MVR. Must qualify on: Scheme training, Window training. Other note.	06	MAIL PROCESSING CLERK	<input type="text" value="2"/>
45766	BENSON (MN) POST OFC - IN SHD	Test Work Location	NON-TRADITIONAL FULL-TIME	Monday to Friday	40	Acceptable driving record. Provide MVR. Must qualify on: Scheme training, Window training. Other note.	06	SALES, SVC S/DISTRIBUTION ASSOC	<input type="text" value="3"/>
45768	BENSON (MN) POST OFC - IN SHD	Test Work Location	PART-TIME FLEXIBLE	Monday to Friday	30+	Acceptable driving record. Provide MVR. Must qualify on: Scheme training, Window training. Other note.	06	SALES, SVC S/DISTRIBUTION ASSOC	<input type="text" value="4"/>

## Just 2 more steps – to complete the process.

6. Again, complete the last field that has a red asterisk \*

7. Hit Save – you have completed your first canvass!!

After you have saved and submitted your canvass you will receive an Acknowledgment Letter that you may print out for your records.

This is to acknowledge receipt of your request on 01/17/2022 for the following canvass.

**Choice Number 1**

Requested Installation: ALBANY(MN) POST OFC - INSHD

Position Title: MAIL PROCESSING CLERK

**Choice Number 2**

Requested Installation: ALBANY(MN) POST OFC - INSHD

Position Title: MAIL PROCESSING CLERK

**Choice Number 3**

Requested Installation: BENSON(MN) POST OFC - INSHD

Position Title: SALES,SVCS/DISTRIBUTION ASSOC

**Choice Number 4**

Requested Installation: BENSON(MN) POST OFC - INSHD

Position Title: SALES,SVCS/DISTRIBUTION ASSOC

You are required to make your selections by indicating your preference number. You will not be considered for positions without a preference number.

During the open posting, in order to make a change, you must withdraw and resubmit your selection(s). Selections are made based on seniority/relative standing in your current bid cluster/craft. A canvass to fill a PTF vacancy are awarded to PTF Clerks that apply above PSE applicants, a canvass to fill a FT position is only offered to PSE applicants.

If the position you are awarded has a skill you are not currently qualified for (i.e. window, bulk mail), you will enter training in your current bid cluster. Upon successful qualification you will be awarded the position and the effective date will be established. If you fail to qualify you will remain in your current bid cluster in your current position/status.

Once you are awarded a selection in a canvass, you will be ineligible to participate in future postings for 12 months from the effective date of placement.

You can review your request and update your contact information at the eReassign web site <https://eReassign.usps.com>

[Return to Welcome Page](#)

[Print Confirmation](#)



All canvasses are awarded on career seniority date / non-career relative standing dates and preference numbers.

If you need to withdraw from one or more offices that you selected in the canvass you will be able to do so by simply clicking the “Withdraw Request” button. You should add a checkmark next to the office that you wish to withdraw from and then hit the submit button.

### Withdraw Request

---

Check which choice(s) of the request you wish to withdraw. Only choice(s) with checkboxes are eligible to be withdrawn. Choice(s) that are not selected will remain active. It is important to note that once a choice(s) is withdrawn, it cannot be reverted back for selection. Withdrawn choices can not be reopened.

Withdrawn Date:

01/17/2022

Employee Name:

KURKOSKI, RICHARD M

**\*Employee Choice(s):**

- ☐ MAIL PROCESSING CLERK, ALBANY(MN) POST OFC - INSHD
- ☐ MAIL PROCESSING CLERK, ALBANY(MN) POST OFC - INSHD
- ☐ SALES,SVCS/DISTRIBUTION ASSOC, BENSON(MN) POST OFC - INSHD
- ☐ SALES,SVCS/DISTRIBUTION ASSOC, BENSON(MN) POST OFC - INSHD

Submit

Cancel

**\*\*\* Each employee can only submit one 50-Mile Canvass request per posting period. Each APWU employee is only eligible for acceptance via one canvass per 12-month period. eReassign transfers are still available to PTF clerks.\*\*\***